

Commission H (Waves in Plasmas) Activity Report (final)

November 10th, 2009

T. Okada, and Y. Omura

Research Topics

<Akebono>

Akebono (EXOS-D) satellite has been observing electromagnetic waves in geomagnetized plasmas. It is necessary to know the antenna impedance of the VLF electric field antennas onboard Akebono to calibrate the electric field component data. Higashi et al. [2009] studied the fluctuation of the short-term antenna impedance, where statistical analysis on the capacitance component of the antenna impedance was performed. They analyzed data observed by Akebono from 1989 through 1995 and investigated the possible effects on the impedance of the strength of geomagnetic field and Akebono altitude and velocity (see Figure 1).

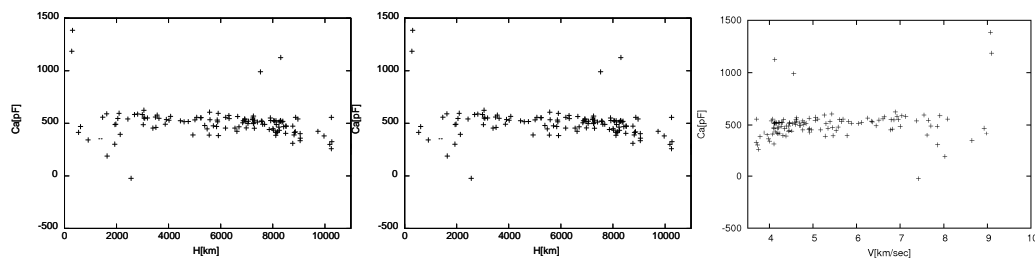


Figure 1: Dependence of the antenna capacitance on the geomagnetic field, Akebono altitude and velocity.

<GEOTAIL>

GEOTAIL spacecraft has been operated since 1992. The Plasma Wave Instrument (PWI) is continuously collecting spectrum data and high time-resolution waveform data. It is expected to be in a good condition at least until the next long eclipse in 2010. The 24 hour plots of the observed wave spectrum data have been opened in the PWI web site <http://www.rish.kyoto-u.ac.jp/gtlpwi>, and <http://www.stp.isas.jaxa.jp/geotail>. Furthermore, one can easily also access the PWI 2 hour plots with full time and frequency resolution through the above web page.

<BepiColombo>

The BepiColombo is the science mission to Mercury. It is the first collaborative science mission between JAXA and ESA. The BepiColombo mission consists of two individual spacecraft called MPO (Mercury Planetary Orbiter) and MMO (Mercury Magnetospheric Orbiter). Scientists in Japan and Europe jointly proposed the plasma wave observation system called PWI (Plasma Wave Investigation). The proposal was successfully accepted and the development of the PWI component started. The MMO launch is scheduled in 2014. The Principal Investigator of the PWI is Prof. Yasumasa Kasaba of Tohoku University.

The PWI investigates plasma/radio waves and DC electric field in Mercury magnetosphere. It consists of two components of receivers, two sets of electric field sensors, two kinds of magnetic field sensors, and the antenna impedance measurement system.

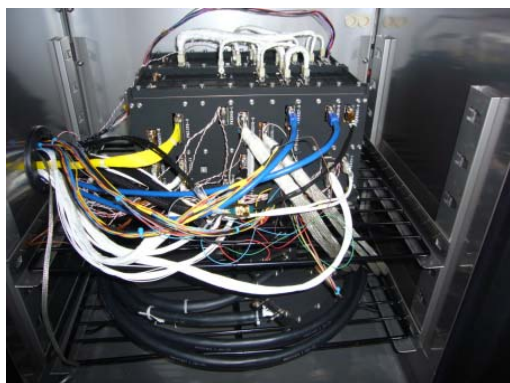


Photo 1: Thermal tests of the PME engineering model.

The PWI consists of EWO, MEFISTO-E, SORBET, and AM2P receiver components as well as WPT-S, MEFISTO-S as electric field sensors and LF-SC and DB-SC as magnetic field sensors. The engineering models of these components have been performed and tested in Kyoto University in April, 2009. The test results show the good features except for non-serious problems. Furthermore, the thermal tests in the PWI level have been performed in October, 2009. All of the PWI components joined the tests and checked their function. The followed environment tests of the PWI such as the thermal-vacuum tests and vibration tests will be scheduled in November, 2009.

<Polar Region Experiments>

Ozaki et al [2009a] suggested a new remote sensing technique for enhanced electron density in the lower ionosphere. This technique is based on the difference in the ionospheric attenuation between VLF whistler mode waves (daytime chorus emissions) and 30 MHz CNA both observed on the ground. They found that the both correlation has information on the vertical profile of the enhanced electron density in the lower ionosphere caused by electron precipitation. This allows the study of the electron precipitation in the daytime.

< KAGUYA (SELENE)>

Measurements of Radio and Plasma Waves Using WFC/LRS Onboard KAGUYA

KAGUYA was launched on September, 14, 2007 in order to explore the surface distribution of elements and minerals, surface and subsurface structures of the moon, the gravitational field, the magnetic field, and energy particles originating from the moon, as well as from solar/interplanetary space (Kato et al., 2007). The Lunar Radar Sounder (LRS) is one of the scientific instruments onboard the KAGUYA main orbiter (Ono et al., 2008; 2009b). The LRS consists of two orthogonal 30 m tip-to-tip antennas and three subsystems; the sounder observation (SDR), the natural plasma wave receiver (NPW), and the waveform capture (WFC). A main objective of the SDR is to investigate the surface and subsurface structures of the moon using an HF radar technique (Ono et al., 2009a; 2009b), and the NPW and the WFC are designed to measure natural plasma waves around the moon and in interplanetary space originating from the sun, from the earth, and from other planets (Kasahara et al., 2009b; Kumamoto et al. 2009). The NPW covers the frequency range from 20 kHz to 30 MHz, and the WFC covers the lower frequency range from 100 Hz to 1 MHz. The operation of KAGUYA ended its scheduled nominal mission on October 31, 2008, and the mission was extended until KAGUYA was impacted to the south-east of near side of the moon on June 10, 2009.

Nominal data acquisition of the LRS was performed until the observation halt of LRS due to hardware trouble occurred on September 10, 2008 (Ono et al., 2009) and the operation of the LRS was

suspended for ~5 months. Although passive measurements by the NPW and WFC in the nominal data rate mode of 176 kbps were tentatively recovered for ~30 hours around November 8, 2008, it was finally found that one of the FPGA on the DSP board for the SDR was functionally unstable. Because the DSP board was also responsible for the NPW operation, we had no choice but to abandon the SDR and NPW observation.

On the other hand, the operation of WFC was resumed on February 19, 2008 and the operation was continuously performed until KAGUYA was impacted to the south-east of near side of the moon on June 10, 2009.

When the operation of the WFC was resumed, KAGUYA spacecraft had already been descended to the 50 km altitude since February 1, 2009. KAGUYA was descended again to 10-30km in lower altitude (perilune) from April 16, 2009. As the telemetry rate was limited at 4 kbps, we firstly performed spectrum measurement of the WFC-H with PHASE mode from February 19, 2008 to May 26, 2009. During the last part of the extended mission from May 26, 2009 to the moment of the KAGUYA's impact to the moon on June 10, 2009, we also made a waveform observation using the WFC-L. The data rate of 2 kbps was assigned to one component (WFC-H-X) spectrum in FFT mode, and the rest of 2 kbps was assigned to waveform data from WFC-L-X below 12.5 kHz. The detailed data analysis obtained during the extended mission is now progressing and we expect many scientific outputs such as electron density profile around lunar wake (Kasahara et al., 2009a) and lunar ionosphere using low frequency wave reflection (Goto et al., 2009).

<ULF Waves>

Kataoka et al. (2009) applied the Hilbert-Huang Transform (HHT) to high-latitude search-coil ground-magnetometer data at an auroral expansion onset, which data was quite fluctuative (leading to no meaningful results when a regular FFT is applied) as in usual onsets. As a result, HHT could automatically extract Pi 1, Pi 2, and Pc 3. Thus, Kataoka et al. suggested that HHT is useful for understanding the onset mechanism of auroral substorms.

The AOGS (Asia Oceania Geoscience Society) 2009 meeting was held in Singapore on Aug. 11-15, 2009. The IAGA (International Association of Geomagnetism and Aeronomy) 2009 meeting was held in Sopron, Hungary on Aug. 23-30, 2009. The 126th SGEPS (Society of Geomagnetism and Earth Planetary and Space Sciences) fall meeting was held in Kanazawa, Japan on Sep. 27-30, 2009. These meetings covered a wide area of geosciences, including ULF waves, thus wide varieties of papers were presented related to ULF waves.

<Ionospheric effects on Radio Wave Propagation>

Lightning-generated sferics observations

Koide et al. [2009] have been investigating the technique for estimating lightning current by using the sferic wave fields. In their technique, they have succeeded in obtaining information on the discharge duration of the return stroke that was impossible to know only from the conventional wave field observation. They have also found that it is possible to estimate the waveform of the return stroke current by using a nonlinear least-squares method applied to the wave field. Figure 2 shows the estimated current moment waveforms by using the direct waveforms of the observed sferic wave field. As a result, their method has shown that the error in the estimation of the current moment is less than 10 % for the horizontal distances of the lightning over 100 km. This current estimation technique is applied to the analysis of the natural VLF/LF harmonic waves observed in Antarctica, whose frequency spacing is determined by the lightning discharge duration [Ozaki et al., 2009b].

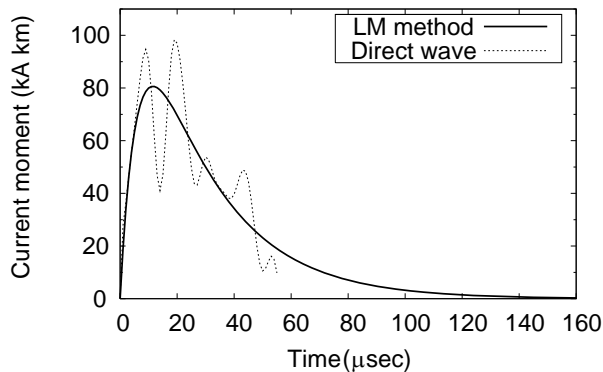


Figure 2: Estimated current moment waveforms (solid line) and the direct waveforms of the observed sferics (dotted line).

References

- Cardinal, M.G.C., Kiyohumi Yumoto, and A. Babatunde Rabi, Characteristics of equatorial Pc3-4 ULF waves using CPMN data, AOGS (Asia Oceania Geosciences Society) 2009 Meeting, Singapore, Aug. 11-15, 2009.
- Fujimoto, Akiko, Terumasa Tokunaga, Shuji Abe, Teiji Uozumi, Akimasa Yoshikawa, Ian R. Mann, Peter J. Chi, Mark Engebretson, Kiyohumi Yumoto, and MAGDAS/CPMN Group, ULTIMA magnetic power spectral density and its radial diffusion coefficients for relativistic electron enhancement, 126th SGEPS (Society of Geomagnetism and Earth, Planetary and Space Sciences) Fall Meeting, Kanazawa, Japan, Sep. 27-30, 2009.
- Fujita, Shigeru, Tetsuro Motoba, and Takashi Tanaka, ULF waves driven by solar wind disturbances, IAGA (International Association of Geomagnetism and Aeronomy) 11th Scientific Assembly, Sopron, Hungary, Aug. 23-30, 2009.
- Fukami T., R. Higashi, M. Nishitani, Radio duct at the UHF TV frequency band upper the Japan Sea, B005-P041, 2009 SGEPS Fall Meeting, September 2009, Kanazawa. Futatsuya T., T. Miyake, K. Ishisaka, Y. Ashihara, Y. Murayama, S. Kawamura, I. Nagano, T. Okada, Study on MF radar with Full wave analysis, B005-P010, 2009 SGEPS Fall Meeting, September 2009, Kanazawa.
- Fukuhara H., H. Kojima, H. Ikeda, Y. Ueda, Development of Miniaturized waveform capture/sweep frequency analyzer of plasma wave receivers onboard scientific spacecraft, B006-08, 2009 SGEPS Fall Meeting, September 2009, Kanazawa.
- Goto Y., T. Fujimoto, Y. Kasahara, A. Kumamoto, T. Ono, Exploration of the lunar ionosphere using the interference pattern of the AKR spectrum, S001-P003, 2009 SGEPS Fall Meeting, September 2009, Kanazawa.
- Goto, Y., T. Fujimoto, Y. Kasahara, A. Kumamoto and T. Ono, Feasibility of lunar ionosphere exploration using low frequency wave reflection, Proc. of 6th Annual Meeting of Asia Oceania Geosciences Society, Singapore, 2009.
- Hasegawa, Hiroshi, Excitation, development, and roles of Kelvin-Helmholtz waves at the magnetopause, AOGS (Asia Oceania Geosciences Society) 2009 Meeting, Singapore, Aug. 11-15, 2009.
- Hasegawa, Hiroshi, James P. McFadden, and Vassilis Angelopoulos, Simultaneous THEMIS observations of magnetospheric ULF waves and magnetopause Kelvin-Helmholtz waves for northward IMF, 126th SGEPS (Society of Geomagnetism and Earth, Planetary and Space Sciences) Fall Meeting, Kanazawa, Japan, Sep. 27-30, 2009. Higashi, R., T. Imachi, Y. Kasahara, and S. Yagitani, "Statistical analysis on antenna impedance of electric field sensors onboard Aekbono,"

- 126th SGEPPSS Meeting, Kanazawa, September 27-30, 2009.
- Hasegawa H., J. P. McFadden, V. Angelopoulos, Simultaneous THEMIS observations of magnetospheric ULF waves and magnetopause Kelvin-Helmholtz waves for northward IMF, B006-P004, 2009 SGEPPSS Fall Meeting, September 2009, Kanazawa.
- Hashimoto K., A. Kumamoto, Y. Kasahara, Y. Goto, T. Ono, KAGUYA (SELENE) observations of high frequency waves affected by the moon, S001-14, 2009 SGEPPSS Fall Meeting, September 2009, Kanazawa.
- Hashitani M., K. Hashimoto, Y. Omura, Y. Kasahara, H. Kojima, H. Tsunakawa, Study on electrostatic solitary waves(ESW) observed by the KAGUYA(SELENE) spacecraft, S001-16, 2009 SGEPPSS Fall Meeting, September 2009, Kanazawa.
- Hayakawa H., H. Ogawa, K. Minesugi, T. Takashima, A. Matsuoka, S. Nakazawa, S. Kameda, H. Yamakawa, Y. Kasaba, BepiColombo Euro-Japan Joint mission to Mercury: MMO Project Status update, B009-P016, 2009 SGEPPSS Fall Meeting, September 2009, Kanazawa.
- Higashi R., T. Imachi, Y. Kasahara, S. Yagitani, Statistical analysis on antenna impedance of electric field sensors onboard Aekbono, B006-P024, 2009 SGEPPSS Fall Meeting, September 2009, Kanazawa.
- Hikishima M., Y. Omura, Formation of pancake distribution of energetic electrons at the equator through nonlinear trapping by chorus emissions, B008-P004, 2009 SGEPPSS Fall Meeting, September 2009, Kanazawa.
- Hirono T., T. Miyake, Y. Omura, H. Kojima, Particle simulations about generation mechanism of low frequency waves excited from beam instabilities, B008-P005, 2009 SGEPPSS Fall Meeting, September 2009, Kanazawa.
- Horie H., Y. Kasahara, Y. Goto, T. Imachi, H. Kojima, K. Hashimoto, Y. Omura, A. Kumamoto, T. Ono, H. Tsunakawa, LRS Development Team, KAGUYA MAP-LMAG Team, S001-P006, 2009 SGEPPSS Fall Meeting, September 2009, Kanazawa.
- Ikeda, Akihiro, Kiyohumi Yumoto, Teiji Uozumi, Manabu Shinohara, Kenro Nozaki, Akimasa Yoshikawa, Boris M. Shevtsov, and Vasily V. Bychkov, Phase Relation of the Ionospheric Doppler Velocity with Magnetic Pi 2 Pulsations: FM-CW Radar and MAGDAS Observation, 126th SGEPPSS (Society of Geomagnetism and Earth, Planetary and Space Sciences) Fall Meeting, Kanazawa, Japan, Sep. 27-30, 2009.
- Imai T. K., Iwata T., Kondo, A. Ishii, H. Misawa, F. Tsuchiya, T. Nakajo, T. Ohno, M. Imai, H. Noda, H. Takeuchi, A. Kumamoto, Y. Nariyuki, N. Kawano, LLFAST Project: Jupiter radio e-VLBI network and the future plan, B009-02, 2009 SGEPPSS Fall Meeting, September 2009, Kanazawa.
- Ishisaka K., T. Miyake, T. Okada, S. Watanabe, T. Abe, T. Ono, M. Nakamura, Measurement of DC electric field in the ionosphere by S-520-23 sounding rocket, B005-036, 2009 SGEPPSS Fall Meeting, September 2009, Kanazawa.
- Iwata T., K. Imai, H. Noda, H. Takeuchi, H. Misawa, F. Tsuchiya, A. Kumamoto, T. Kondo, T. Nakajo, Y. Nariyuki, K. Asari, N. Kawano, LLFAST Project: Moon-Earth Space VLBI for Jovian Radio Wave Observation, B009-01, 2009 SGEPPSS Fall Meeting, September 2009, Kanazawa.
- Kasaba Y., T. Takashima, Science Operation Concept based on "the MDP scheme" for BepiColombo/MMO – Update, B009-P015, 2009 SGEPPSS Fall Meeting, September 2009, Kanazawa.
- Kasahara, Y., A. Muro, Y. Goto, K. Hashimoto, Y. Omura, A. Kumamoto, T. Ono, H. Tsunakawa, LRS/WFC team, and MAP/LMAG team, Electron plasma wave and electron density profile around the moon observed by KAGUYA LRS/WFC, Proc. of 6th Annual Meeting of Asia Oceania Geosciences Society, Singapore, (2009a).
- Kasahara, Y., Y. Goto, K. Hashimoto, A. Kumamoto, T. Ono, Y. Omura, T. Imachi, and H. Matsumoto, Measurements of Radio and Plasma Waves Using Passive Receivers Onboard KAGUYA/LRS, Space Science Review, (submitted), (2009b).
- Kasahara Y., A. Muro, Y. Goto, M. N Nishino, K. Hashimoto, Y. Omura, A. Kumamoto, T. Ono, H. Tsunakawa, LRS Development Team, Asymmetric distribution of electron density around the lunar wake derived from KAGUYA LRS/WFC observation, S001-15, 2009 SGEPPSS Fall Meeting, September 2009, Kanazawa.

- Kataoka, R., Y. Miyoshi, and A. Morioka (2009), Hilbert-Huang Transform of geomagnetic pulsations at auroral expansion onset, *J. Geophys. Res.*, 114, A09202, doi:10.1029/2009JA014214.
- Kato, M., S. Sasaki, K. Tanaka, Y. Iijima and Y. Takizawa, The Japanese lunar mission SELENE: Science goals and present status, *Adv. Space Res.*, 42(2), 294-300, (2007).
- Katoh Y., Y. Omura, Study of the threshold of wave amplitude in generating chorus emissions, B008-17, 2009 SGEPPSS Fall Meeting, September 2009, Kanazawa.
- Kawano, Hideaki, V. Pilipenko, S. Saita, K. Yumoto, and I. Mann, Improved hodograph method to estimate the latitude dependencies of the frequency and width of the field-line resonance from ground magnetometer data, IAGA (International Association of Geomagnetism and Aeronomy) 11th Scientific Assembly, Sopron, Hungary, Aug. 23-30, 2009.
- Kawano, Hideaki, Viacheslav Pilipenko, Satoko Saita, Kiyohumi Yumoto, and Ian R. Mann, Improved hodograph method: Application to ground magnetometer data to identify the field-line resonance, 126th SGEPPSS (Society of Geomagnetism and Earth, Planetary and Space Sciences) Fall Meeting, Kanazawa, Japan, Sep. 27-30, 2009.
- Kimura T., R. J. MacDowall, R. A. Hess, P. Zarka, B. Cecconi, Y. Kasaba, F. Tsuchiya, H. Misawa, A. Morioka, Propagation and source properties of Jovian quasi-periodic bursts viewed from analyses of Ulysses and Cassini data and ray tracing, B009-03, 2009 SGEPPSS Fall Meeting, September 2009, Kanazawa. Kitaguchi S., Y. Kasahara, Y. Goto, K. Hashimoto, A. Kumamoto, T. Ono, H. Tsunakawa, LRS Development Team, KAGUYA MAP-LMAG Team, Analysis of wave phenomena over the magnetic anomaly observed by WFC onboard KAGUYA, S001-P007, 2009 SGEPPSS Fall Meeting, September 2009, Kanazawa.
- Kitamura, Kentarou, Shin-Ichi Watari, Manabu Kunitake, Takahiro Obara, Hideki Koshiishi, and Satoko Saita, Comparison between high-energy electron flux at geosynchronous orbit and ULF pulsations on the ground, IAGA (International Association of Geomagnetism and Aeronomy) 11th Scientific Assembly, Sopron, Hungary, Aug. 23-30, 2009 Koide, T., S. Yagitani, M. Ozaki, and I. Nagano, "Lightning return stroke current estimation by nonlinear least squares method applied to the spherics," 126th SGEPPSS Meeting, Kanazawa, September 27-30, 2009.
- Koide T., S. Yagitani, M. Ozaki, I. Nagano, Lightning return stroke current estimation by nonlinear least squares method applied to the spherics, B005-P012, 2009 SGEPPSS Fall Meeting, September 2009, Kanazawa.
- Kondo T., T. Iwata, K. Imai, H. Noda, H. Takeuchi, H. Misawa, F. Tsuchiya, A. Kumamoto, T. Nakajo, Y. Nariyuki, K. Asari, N. Kawano, A sampler unit for the LLFAST system, B009-P001, 2009 SGEPPSS Fall Meeting, September 2009, Kanazawa. Koshida T., T. Ono, M. Iizima, A. Kumamoto, T. Shibata, K. Hosokawa, Observation of time-variable wave-modulated Jovian L-burst emissions using waveform receiver, B009-04, 2009 SGEPPSS Fall Meeting, September 2009, Kanazawa.
- Kumamoto, A., T. Ono, H. Nakagawa, and Y. Kasahara, Observations of Natural and Artificial Radio Waves in LF-HF Range by the Lunar Radar Sounder (LRS) onboard the Kaguya (SELENE) Spacecraft, *Space Sci. Rev.*, (submitted), (2009).
- Kumamoto A., T. Ono, S. Oshigami, T. Kobayashi, H. Nakagawa, Y. Yamaguchi, A. Yamaji, Y. Kasahara, H. Oya, Observations of surface and buried regolith layers by Lunar Radar Sounder (LRS) onboard the Kaguya (SELENE) spacecraft, S001-05, 2009 SGEPPSS Fall Meeting, September 2009, Kanazawa.
- Kumamoto A., T. Ono, H. Nakagawa, K. Hashimoto, Y. Kasahara, Y. Goto, Reflectivity of the lunar surface measured by active and passive radio wave observations of the Kaguya spacecraft, S001-P002, 2009 SGEPPSS Fall Meeting, September 2009, Kanazawa.
- Matsukiyo, Shuichi and Tohru Hada, Particle acceleration in developing relativistic Alfvén turbulence, 126th SGEPPSS (Society of Geomagnetism and Earth, Planetary and Space Sciences) Fall Meeting, Kanazawa, Japan, Sep. 27-30, 2009. Matsuoka, Ayako, Taku Takada, Masahiro Hoshino, Hajime Hayakawa, and Toshifumi Mukai, Estimation of the dimensional scale of the Alfvén waves carrying electromagnetic energy in the plasma sheet, 126th SGEPPSS (Society of Geomagnetism and Earth,

- Planetary and Space Sciences) Fall Meeting, Kanazawa, Japan, Sep. 27-30, 2009.
- Misawa H., Variation characteristics of Jupiter's hectometric radiation in the solar quiet period, B009-P002, 2009 SGEPPSS Fall Meeting, September 2009, Kanazawa.
- Miyake Y., H. Usui, Y. Omura, H. Nakashima, EMSES: Development of Electromagnetic Particle Simulation Code for the Analysis of Spacecraft-Plasma Interactions, B008-P011, 2009 SGEPPSS Fall Meeting, September 2009, Kanazawa.
- Miyoshi, Yoshizumi, Kaori Sakaguchi, Kazuo Shiokawa, Jay Albert, David Evans, Martin Connors, and Vania Jordanova, Coincident precipitation of ring current ions and radiation belt electrons by EMIC waves, AOGS (Asia Oceania Geosciences Society) 2009 Meeting, Singapore, Aug. 11-15, 2009.
- Miyoshi Y., R. Kataoka, Y. Kasahara, Whistler mode chorus activities in the outer radiation belt associated with stream interface crossings, B006-35, 2009 SGEPPSS Fall Meeting, September 2009, Kanazawa.
- Morioka A., Y. Miyoshi, F. Tsuchiya, H. Misawa, Y. Kasaba, R. Kataoka, A. Kadokura, K. Yumoto, H. Matsumoto, Two-step evolution of auroral acceleration and pseudo-/full-substorms, B006-33, 2009 SGEPPSS Fall Meeting, September 2009, Kanazawa.
- Nakagawa T., F. Takahashi, H. Tsunakawa, KAGUYA MAP-LMAG Team, Non-monochromatic whistler waves detected by Kaguya on the dayside surface of the moon, S001-17, 2009 SGEPPSS Fall Meeting, September 2009, Kanazawa.
- Nakajima M., Y. Ashihara, K. Ishisaka, T. Okada, T. Miyake, Doppler shift Analysis of the MF band broadcasting wave in S-520-23 sounding rocket, B005-P042, 2009 SGEPPSS Fall Meeting, September 2009, Kanazawa.
- Nakamizo, Aoi, Generation of the substorm-FAC by slow mode disturbances in the near earth plasma sheet, IAGA (International Association of Geomagnetism and Aeronomy) 11th Scientific Assembly, Sopron, Hungary, Aug. 23-30, 2009.
- Nakamura M., Hybrid simulation of interaction the solar wind and the mini-magnetosphere, B008-05, 2009 SGEPPSS Fall Meeting, September 2009, Kanazawa.
- Nariyuki Y., T. Umeda, On nonlinearity of Langmuir turbulence excited by the electron beam-plasma interactions, B008-11, 2009 SGEPPSS Fall Meeting, September 2009, Kanazawa.
- Obana, Yuki, Frederick W. Menk, and Ichiro Yoshikawa, A conjunction study of plasmaspheric drainage plumes in June 2001 using IMAGE-EUV and cross-phase measurements, IAGA (International Association of Geomagnetism and Aeronomy) 11th Scientific Assembly, Sopron, Hungary, Aug. 23-30, 2009.
- Obana, Yuki, Frederick W. Menk, and Ichiro Yoshikawa, Simultaneous observation of plasmaspheric refilling using ULF and He⁺ imaging data, IAGA (International Association of Geomagnetism and Aeronomy) 11th Scientific Assembly, Sopron, Hungary, Aug. 23-30, 2009.
- Obana, Yuki, Fukuhiro Ezawa, Go Murakami, and Ichiro Yoshikawa, An intercomparison study of the plasmopause between IMAGE EUV, SELENE-UPI, and cross-phase measurements, IAGA (International Association of Geomagnetism and Aeronomy) 11th Scientific Assembly, Sopron, Hungary, Aug. 23-30, 2009.
- Obana, Yuki, Frederick W. Menk, and Ichiro Yoshikawa, A Study of Plasmaspheric Refilling during Recovery Phases of Moderate Magnetic Storms using Cross-Phase Measurements, 126th SGEPPSS (Society of Geomagnetism and Earth, Planetary and Space Sciences) Fall Meeting, Kanazawa, Japan, Sep. 27-30, 2009.
- Obana, Yuki, Go Murakami, and Ichiro Yoshikawa, Identifying the Plasmopause Using Coordinated Ground-based Magnetometers, IMAGE-EUV, and KAGUYA-TEX Data, 126th SGEPPSS (Society of Geomagnetism and Earth, Planetary and Space Sciences) Fall Meeting, Kanazawa, Japan, Sep. 27-30, 2009.
- Ogasawara K., Y. Kasaba, Y. Nishimura, T. Hori, T. Takada, Y. Miyashita, V. Angelopoulos, J. W. Bonnell, J. P. McFadden, Properties of large-amplitude electric fields during substorms obtained by THEMIS, B006-P010, 2009 SGEPPSS Fall Meeting, September 2009, Kanazawa.
- Okada M., H.

- Yamagishi, M. Ozaki, Development of Unmanned VLF Wideband Monitoring System at West Ongul Island, Syowa Station, B006-P021, 2009 SGEPPSS Fall Meeting, September 2009, Kanazawa.
- Omura Y., M. Hikishima, Y. Katoh, D. Summers, S. Yagitani, Generation mechanism of upper-band chorus emissions in the equatorial magnetosphere, B008-16, 2009 SGEPPSS Fall Meeting, September 2009, Kanazawa.
- Ono, T., A. Kumamoto, Y. Yamaguchi, A. Yamaji, T. Kobayashi, Y. Kasahara, and H. Oya, Instrumentation and Observation Target of the Lunar Radar Sounder (LRS) Experiment on-board the SELENE Spacecraft, *Earth, Planets and Space*, 60(4), 321-332, (2008).
- Ono, T., A. Kumamoto, H. Nakagawa, Y. Yamaguchi, S. Oshigami, A. Yamaji, T. Kobayashi, Y. Kasahara, and H. Oya, Lunar Radar Sounder Observations of Subsurface Layers under the Nearside Maria of the Moon, *Science*, 323, 909-912, (2009a).
- Ono, T., A. Kumamoto, Y. Yamaguchi, A. Yamaji, T. Kobayashi, S. Oshigami, H. Nakagawa, Y. Kasahara, and H. Oya, The Lunar Radar Sounder (LRS) onboard the Kaguya (SELENE) Spacecraft, *Space Sci. Rev.*, (submitted), (2009b).
- Oya H., Reinvestigation of Extremely Large Enhancements of JDR due to the Fragments of SL-9 Comet—Overlooked significant evidences, B009-P036, 2009 SGEPPSS Fall Meeting, September 2009, Kanazawa.
- Ozaki, M., S. Yagitani, I. Nagano, H. Yamagishi, and N. Sato, “Estimation of enhanced density in the lower ionosphere using correlation between natural VLF emission intensity and CNA,” *Antarctic Record*, Vol. 53, No. 2, pp.123-135, July, 2009a.
- Ozaki M., S. Yagitani, M. Okada, H. Yamagishi, I. Nagano, Study on natural harmonic VLF/LF waves in the polar region, B005-P023, 2009 SGEPPSS Fall Meeting, September 2009b, Kanazawa.
- Sakai, Mina, Terumasa Tokunaga, Teiji Uozumi, Shuji Abe, Akihiro Ikeda, Akimasa Yoshikawa, Hideaki Kawano, Kiyohumi Yumoto, and MAGDAS/CPMN Group, Automatic Identification of Pi 2 Pulsations using MAGDAS/CPMN Network -Toward Construction of a new Pi 2 Index-, 126th SGEPPSS (Society of Geomagnetism and Earth, Planetary and Space Sciences) Fall Meeting, Kanazawa, Japan, Sep. 27-30, 2009.
- Sato Y., T. Ono, N. Sato, R. Fujii, S. Nozawa, Y. Ogawa, Upper hybrid mode and ESCH waves in the auroral ionosphere: A possible source of MF auroral radio emissions, B006-P006, 2009 SGEPPSS Fall Meeting, September 2009, Kanazawa.
- Shinbori, Atsuki, Yuji Tsuji, Takashi Kikuchi, Tohru Araki, Shin Ichi Watari, Teiji Uozumi, and Kiyohumi Yumoto, Magnetic latitude and local time dependence of the amplitude of geomagnetic sudden commencements, IAGA (International Association of Geomagnetism and Aeronomy) 11th Scientific Assembly, Sopron, Hungary, Aug. 23-30, 2009.
- Shiraishi T., T. Miyake, K. Ishisaka, T. Okada, Y. Kasahara, Y. Goto, K. Hashimoto, A. Kumamoto, T. Ono, H. Tsunakawa, KAGUYA MAP-LMAG Team, Analysis of low-frequency plasma wave observed by Waveform Capture (WFC) onboard KAGUYA, S001-P005, 2009 SGEPPSS Fall Meeting, September 2009, Kanazawa.
- Shirakawa, Keisuke and Masahiro Hoshino, Propagation of MHD waves in differentially rotating system and its contribution to Magneto-Rotational Instability, 126th SGEPPSS (Society of Geomagnetism and Earth, Planetary and Space Sciences) Fall Meeting, Kanazawa, Japan, Sep. 27-30, 2009.
- Shirakawa K., M. Hoshino, Propagation of MHD waves in differentially rotating system and its contribution to Magneto-Rotational Instability, B008-13, 2009 SGEPPSS Fall Meeting, September 2009, Kanazawa.
- Shoji Y M., Omura, Nonlinear Evolution of Mirror Mode Structures: Comparison with the Magnetic Peaks and Dips in the 3D Simulations, B008-12, 2009 SGEPPSS Fall Meeting, September 2009, Kanazawa.
- Summers D., Self-limitation of radiation belt particle fluxes, B008-18, 2009 SGEPPSS Fall Meeting, September 2009, Kanazawa.
- Suzuki, Takeru K., Roles of Alfvén waves in determining solar wind properties, AOGS (Asia Oceania

- Geosciences Society) 2009 Meeting, Singapore, Aug. 11-15, 2009.
- Suzuki T., Y. Katoh, T. Ono, N. Terada, A. Kumamoto, Numerical experiments of impedance probe measurements in the range of the ion characteristic frequencies, B005-P044, 2009 SGEPS Fall Meeting, September 2009, Kanazawa.
- Takahashi K., T. Miyake, T. Okada, K. Ishisaka, H. Matsumoto, H. Hayakawa, S. Kokubun, Y. Saito, Analysis of LH plasma waves observed by Geotail spacecraft, B006-P012, 2009 SGEPS Fall Meeting, September 2009, Kanazawa.
- Takenaka S., Y. Kasahara, H. Kojima, T. Imachi, A development of simulator for multi-satellite mission (SCOPE), B006-P003, 2009 SGEPS Fall Meeting, September 2009, Kanazawa.
- Tanaka, Yoshimasa and Akimasa Yoshikawa, Magnetosphere-ionosphere coupling in the auroral region via Alfvén waves, 126th SGEPS (Society of Geomagnetism and Earth, Planetary and Space Sciences) Fall Meeting, Kanazawa, Japan, Sep. 27-30, 2009.
- Tanaka R., S. Yagitani, M. Ozaki, Development of Wideband Triaxial Search-coil Magnetometer for ERG satellite mission, B006-P001, 2009 SGEPS Fall Meeting, September 2009, Kanazawa.
- Teramoto, Mariko, Hiroaki Toh, Naoto Oshiman, and Takafumi Kasaya, Pi2 pulsations observed on the shallow sea bottom off Tottori Prefecture, 126th SGEPS (Society of Geomagnetism and Earth, Planetary and Space Sciences) Fall Meeting, Kanazawa, Japan, Sep. 27-30, 2009.
- Teramoto, Mariko, Tim K. Yeoman, Farideh Honary, and Peter R. Sutcliffe, Pi2 pulsations over a wide region observed by the cluster satellites, HF radar, and SAMNET: The event on 5 March 2004, 126th SGEPS (Society of Geomagnetism and Earth, Planetary and Space Sciences) Fall Meeting, Kanazawa, Japan, Sep. 27-30, 2009.
- Terao Y., Y. Kasahara, Y. Goto, Y. Kasaba, H. Kojima, T. Imachi, Mercury Mission Plasmas Wave Team, Investigation of efficient data processing method for the PWI software onboard MMO spacecraft, B009-P017, 2009 SGEPS Fall Meeting, September 2009, Kanazawa.
- Tokunaga, Terumasa, Akimasa Yoshikawa, Teiji Uozumi, Tomoyuki Higuchi, Kazuyuki Nakamura, Kiyohumi Yumoto, and MAGDAS/CPMN Group, An application of frequency-domain ICA to analyze global wave characteristics of Pi 2 magnetic pulsations observed on the ground, 126th SGEPS (Society of Geomagnetism and Earth, Planetary and Space Sciences) Fall Meeting, Kanazawa, Japan, Sep. 27-30, 2009.
- Tomita S., K. Ishisaka, T. Okada, Y. Takahashi, T. Miyake, S. Yagitani, M. Ozaki, The development of a radio wave receiver for next Mars Lander deployment, B009-P022, 2009 SGEPS Fall Meeting, September 2009, Kanazawa.
- Toomi H., K. Ishisaka, T. Miyake, T. Okada, N. Kitamura, A. Shinbori, T. Ono, A. Kumamoto, Y. Nishimura, A. Matsuoka, The study of the characteristics between the spacecraft potential and the electron density using the Akebono satellite, B006-P023, 2009 SGEPS Fall Meeting, September 2009, Kanazawa.
- Tsuchiya F., H. Misawa, S. Sato, A. Morioka, T. Kondo, Two-element radio interferometer for the observation of Jupiter's synchrotron radiation (I), B009-P008, 2009 SGEPS Fall Meeting, September 2009, Kanazawa.
- Umeda T., Vlasov simulation on the interaction between solar wind and a dielectric body, S001-03, 2009 SGEPS Fall Meeting, September 2009, Kanazawa.
- Uozumi, Teiji, Shuji Abe, Kentarou Kitamura, Terumasa Tokunaga, Akimasa Yoshikawa, Hideaki Kawano, Richard Marshall, R. J. Morris, Boris M. Shevtsov, S. I. Solov'yev, Daniel McNamara, Kan Liou, Shinichi Ohtani, Masahiro Itonaga, and Kiyohumi Yumoto, A new interpretation of high-latitude Pi 2 observed at the MAGDAS/CPMN stations, 126th SGEPS (Society of Geomagnetism and Earth, Planetary and Space Sciences) Fall Meeting, Kanazawa, Japan, Sep. 27-30, 2009.
- Usui H., JST-CREST Multi-scale Particle Simulation team, Interactions among an artificial small magnetosphere, the solar wind and the injected plasmas from satellite, B008-04, 2009 SGEPS Fall Meeting, September 2009, Kanazawa.

- Wakabayashi M., T. Ono, T. Suzuki, Improvement in response speed of phase detection type impedance probe, B005-P043, 2009 SGEPPSS Fall Meeting, September 2009, Kanazawa.
- Walker, Raymond J., Keiichiro Fukazawa, Tatsuki Ogino, Maha Ashour-Abdalla, and Mostafa El-Alaoui, A simulation study of Kelvin-Helmoltz waves at Saturn and the Earth, AOGS (Asia Oceania Geosciences Society) 2009 Meeting, Singapore, Aug. 11-15, 2009.
- Yoneda M., T. Miyata, M. Kagitani, S. Sako, S. Okano, Observing program for Io's volcanic activity at a wavelength of mid-infrared, B009-P006, 2009 SGEPPSS Fall Meeting, September 2009, Kanazawa.
- Yoshikawa, Akimasa, Yoshimasa Tanaka, Hiroyuki Nakata, and Aoi Nakamizo, Description of magnetosphere-ionosphere coupled system using Alfvénic-coupling algorithm, 126th SGEPPSS (Society of Geomagnetism and Earth, Planetary and Space Sciences) Fall Meeting, Kanazawa, Japan, Sep. 27-30, 2009.
- Yoshikawa M., Y. Omura, Nonlinear dynamics of energetic electrons interacting with whistler-mode chorus emissions in the inner magnetosphere, B006-P027, 2009 SGEPPSS Fall Meeting, September 2009, Kanazawa.

Conferences and Meetings

- 1) IEEE MTT-S International Microwave Symposium 2009, Boston Massachusetts June 7-12, 2009
- 2) IEEE AP-S 2010, Toronto, Ontario, Canada July 10-17, 2010
- 3) International Symposium on Antenna Technology and Applied Electromagnetics (ANTEM) and the Canadian Radio Sciences Meeting (URSI/CNC), Banff, Canada July 27-30, 2009
- 4) AOGS (Asia Oceania Geosciences Society) 2009 Meeting, Singapore, Aug. 11-15, 2009.
- 5) IAGA (International Association of Geomagnetism and Aeronomy) 11th Scientific Assembly, Sopron, Hungary, Aug. 23-30, 2009. The 11th Scientific Assembly of IAGA, Hungary Aug. 23-30, 2009
- 6) 126th SGEPPSS (Society of Geomagnetism and Earth, Planetary and Space Sciences) Fall Meeting, Kanazawa, Japan, Sep. 27-30, 2009.
- 7) 2009 AGU Fall Meeting, 14–18 December San Francisco, California, USA

Acknowledgement

The editors thank Dr. H. Kojima, Dr. Y. Kasahara, Dr. S. Yagitani, Dr. K. Ishisaka and Dr. H. Kawano for their contribution to this report.